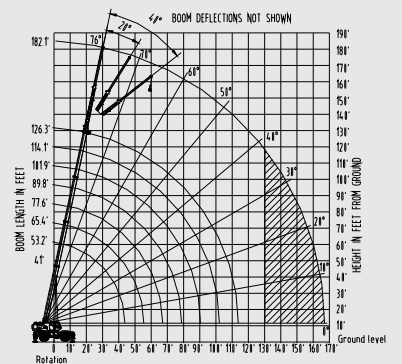
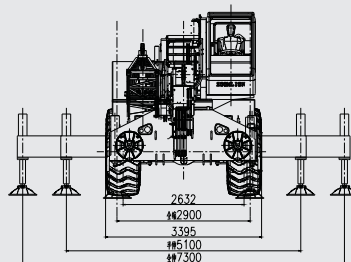
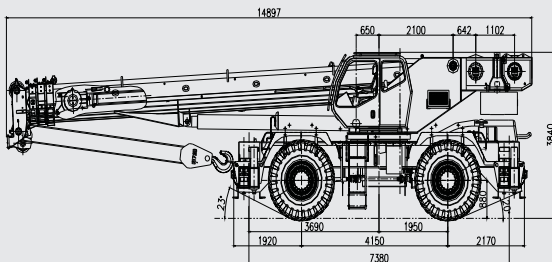


RT75

ROUGH TERRAIN CRANE



The Power of China, The legend of world.

ZOOMLION

RT75 ROUGH TERRAIN CRANE

Specification			
Maximum rated lifting capacity	12.5 m boom	75000 kg at 3 m	
	16.2 m boom	44860 kg at 3 m	
	19.9 m boom	34450 kg at 4.5m	
	23.6 m boom	24700 kg at 5.5 m	
	27.3 m boom	19500 kg at 6.5 m	
	31 m boom	15740 kg at 7.5 m	
	34.7 m boom	12300 kg at 9 m	
	38.5 m boom	10600 kg at 10 m	
Working performance	Max. rated lifting capacity × working radius	kg.m	75000 × 3.0
	Max. load moment of basic boom	kN.m	2814
	Max. load moment of max. length main boom	kN.m	1184
	Max. lifting height of max. length main boom	m	39.2 (to the center of boom head sheave)
	Max. lifting height of jib	m	56.8
Dimensions	Overall dimensions (L × W × H)	mm	14897 × 3400 × 3840
	Distance between outriggers (Longitudinal × transversal)	mm	7380 × 7300
	Main boom length (Completely retracted – completely extended)	mm	12500 - 38500
	Jib length (Completely retracted – completely extended)	mm	10000 - 17000
	Boom angle	°	-3 - 78
	Swing range		360° unlimited swing (Full range)
Working speeds	Max. hoist rope speed (Main winch)	m/min	125
	Min. boom telescoping out time	s	120
	Min. boom telescoping in time	s	90
	Min. boom derricking up time	s	70
	Min. boom derricking down time	s	70
	Swing speed	r/min	0.35 - 2
Hydraulic system	Rated working pressure	MPa	29
	Rated working oil flow	L/min	400
	Hydraulic oil tank capacity	L	1200
Mass	Complete vehicle kerb mass	kg	53100
	Front axle load	kg	27700
	Rear axle load	kg	25400
Driving	Max. driving speed (Forwards / backwards)	km/h	41/41
	Wheelbase	mm	4150
	Treads (Front / Rear)	mm	2632
Specification			
Boom	Formed boom made with high-yield steel which reduces the operation weight of boom and maximize performance		
Axles	We choose the AxleTech brand axle because AxleTech Co. offers the most reliable product on the market and has years of experience in manufacturing mobile crane axles.		
Cab	Full-vision operator's cab is designed for maximum comfort and ease of operation.		
Transmission	The DANA 13.5HR 32662 transmission offers the latest technology for the diverse needs of off-road cranes.		
Engine	The Cummins QSB6.7 diesel engine is TIER-III compliant and is proven to have superior performance and durability.		
LMI	Herschmann 777 LMI delivers most reliable electronic monitoring system available.		
Technical Description			
Engine	Cummins QSB6.7.....inline 6 cylinder intercooled turbo diesel kilowatts kw(Hp).....194(264)@2500rpm peak torque Nm(ft.lb).....990(730)@1500rpm USA Federal EPA/California ARB/European EU/Tier 3 emission rating		

Transmission	DANA powershift transmission 6 speeds forward and 6 speeds reverse. Front axle disconnect offering both 4x4 and 4x2 operation. Max speed41km/hr(25.5)mph		
Axles	AxleTech front and rear steering axles with planetary reduction. Front-Rigid mount Rear-full-Floating rear axle.Automatic rear axle oscillating lock occurs when superstructure is swung 10°from centerline in either direction.		
Steering	Power steering with four independent modes: Front -Wheel Rear-Wheel All-Wheel Crab		
Brakes	406.4 millimeters (16 in) diameter disc brakes on all wheels hydraulically operaed	Tires and Wheels	29.5-25 34 PR,earthmoving-style tiers.Steel disc wheels.
Outriggers	Four independent horizontal beams and vertical jacks with integral holding vavles , each independently controlled from operator cab . 100%—fully extended outrigger footprint—580 sq.ft. (53.9 sq.m) 50%—fully extended outrigger footprint—405 sq.ft. (37.6 sq.m) 0%—fully extended outrigger footprint—230 sq.ft. (21.4 sq.m) light weight aluminum,quick release outrigger pontoons. Floating ground bearing area (0.24 sq.m) (418.5 sq .in). Outrigger Span Length 23.95ft.(7.3m) Width 24.2ft.(7.38m)		
Hydraulic System	PERMCO hydraulic pumps. Gear pump for main and auxiliary winches, boom hoist and telescope cylinders. Gear pump for steering. Gear pump for outriggers and slewing. 317 gallon (1200L) hydraulic reservoir withexternal sight and temperature gauge . Easily accessible (10 micron) cartridge style full flow filters with bypass protection. Max.operating pressure —29Mpa (4250 psi ,290bar)		
Counterweight	Single 19400lb (8.8 kg) hydraulic removable counterweight. Length—9.84ft(3m) Width—3.41ft(1.04m) Height—1.71ft(0.52m)	Swing	Bi-directional hydraulic swing drive with multi-disc wet brake and planet ary reduction gearbox.Spring-applied hydraulically released swing brake and 360o pneumatic positive swing lock. Max.swing speed:.....2rpm
Main Boom	The box-shaped main boom consists of 4 boom sections made of high-strength steel. The main boom head is equipped with 5 sheaves, which is convenient for changing line parts without removing the wedges. The rooster sheave is optional. Fully extended boom length.....126ft. (38.5m) Fully eretracted boom length.....41ft. (12.5m) Max.tip height , main boom128.6ft.(39.2m) Max.tip height,jib erected/pullout extended 186.3ft.(56.8m)		
Boom with Jib	32.8-55.77ft.(10-17m)jib consisting of 32.8ft (10m) lattice side stow jib and 23ft .(7m)manual pull out section.Main jib is offsettable at 0°,20°and 40°. Max tip height with 32.8ft.(10m)jib erected is 163ft(49.7m). Max tip height with 32.8ft.(10m)jib+23ft.(7m) fixed pullout extension is 189.6ft(56.8m).		
Winches	Standard two speed main and auxiliary hoists, each with planetary reduction and spring applied multi-disk wet brake. Each hoist features: Grooved drum lagging. Hoist drum cable followers. Max. permissible line pull:.....19,842 lbs. (9000 kg) Winch speed:..... 0 – 410 ft/min. (0-125 m/min.) Power up / power down. Electronic drum rotation indicators. Rope construction:..... 22MM rotation Resistant compacted strand.		
Hooks	75 t,5 sheave(steel),standard reeve hook block with odd part pin-off and safty latch. Hook block weight.....1433 lb (650Kg) hook ball weight.....265 lb (120Kg) 5.5t,top swivel hook ball safety latch		

www.zoomlion.com