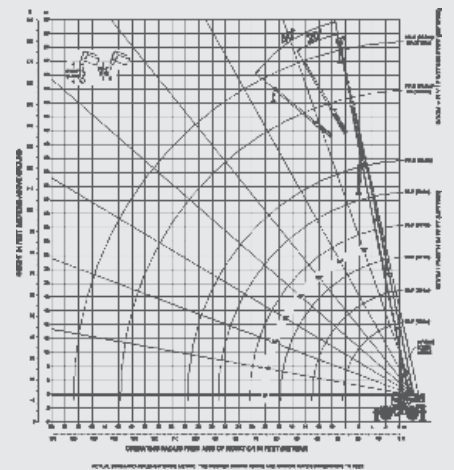
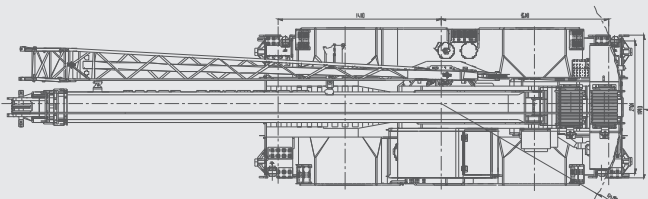
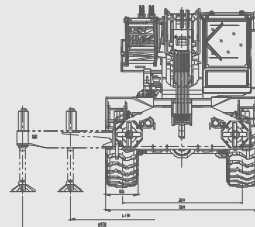
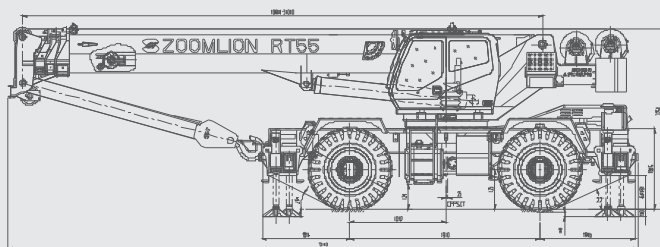


# RT55

## ROUGH TERRAIN CRANE



The Power of China, The legend of world.

**ZOOMLION**

# RT55 ROUGH TERRAIN CRANE

Specification			
Maximum rated lifting capacity	10.1 m boom	55000 kg at 3 m	
	15.4 m boom	27200 kg at 3 m	
	20.1 m boom	26300 kg at 4.5m	
	24.7 m boom	20000 kg at 6 m	
	29.4 m boom	15290 kg at 7.5 m	
	34 m boom	10560 kg at 9 m	
Operating performance parameters	Maximum rated lifting capacity	kg	55000
	Maximum load moment of basic boom	kN.m	1967
	Maximum load moment of the longest main boom	kN.m	1126
	Maximum lifting height of main boom	m	34.8
	Maximum lifting height of jib	m	52.40
Operating speed	Maximum hoist rope speed (main winch)	m/min	150
	Boom derricking up time	s	56
	Boom extending time	s	100
	Slewing speed	r/min	0~2.50
Driving parameters	Maximum traveling speed(forward/backward)	Km/h	39/15
	Minimum turning diameter	m	7.3/12.3
	Minimum ground clearance	mm	520
	Exhaustemission values and smoke limits		National 11/T3
Quality parameters	Total weight	kg	40200
	Front axle load	kg	21440
	Rear axle load	kg	18760
Dimensions	Overall dimensions (LxWxH)	mm	13100x3300x3750
	Longitudinal distance of outriggers	m	6.9
	Lateral distance of outriggers	m	6.9
	Mai boom length	m	10.8~34.0
	Mai boom angle	o	-3~78
	Jib length	m	10~17
	Offset angle of jib	o	0、20、40
	Engine model and power		Cummins QSB6.7/160kw
Specification			
Boom	Formed boom made with high-yield steel which reduces the operation weight of boom and maximize performance		
axles	We choose the Kessler Co.brand axle because Kessler Co. offers the most reliable product on the market and has years of experience in manufacturing mobile crane axles.		
Cab	Full-vision operator's cab is designed for maximum comfort and ease of operation.		
Transmission	The DANA 13.5HR 32662 transmission offers the latest technology for the diverse needs of off-road cranes.		
Engine	The Cummins QSB6.7 diesel engine is TIER-III compliant and is proven to have superior performance and durability.		
LMI	HIRSCHMANN LMI delivers most reliable electronic monitoring system available.		
Technical Description			
Engine	Cummins QSB 6.7.....Inline 6 cylinder intercooled turbo diesel Kilowatts kW(Hp).....160(217.7)@2500 rpm. peak torque Nm(ft.lb).....888(655)@1500 rpm. 303 liter(80 gal) fuel tank capacity  USA FederalEPA/California ARB/European EU/Tier III emission rating		

Transmission	DANA powershift transmission-6 speeds forward and 6 speeds reverse. Front axle disconnect offering both 4X4 and 4X2 operation. Max.speed.....39km/hr(24.3mph).		
Axles	Kessler front and rear steering axles with planetary reduction. Front-Rigid mount. Rear-full-Floating rear axle. Automatic rear axle oscillating lock occurs when superstructure is swung 10° from centerline in either direction.		
Steering	Power steering with four independent modes: Front-Wheel Rear-Wheel All-Wheel Crab		
Brakes	380 millimeters(14.9in)diameter disc brakes on all wheels hydraulically operated.	Tires and Wheels	26.5X25-32 Ply rating, earthmoving-style tires.Steel disc wheels.
Outriggers	Four independent horizontal beams and vertical jacks with integral holding valves, each independently controlled from operator cab. 100%-Fully extended outriggers footprint.....47.6sq.m(512.5sq.ft.) 50%-Mid position outriggers footprint.....33.32sq.m(358.7 sq.ft.). 0%-Fully retracted outriggers footprint.....19 sq.m(205 sq.ft.). pontoon diameter.....0.6m(2.0 ft.). Total floating ground bearing area.....0.24 sq.m(2.58sq.ft.). Outtrigger span.....Length 6.9m(22.8 ft). Width 6.9m(22.8ft.).		
Hydraulic System	PERMCO hydraulic pumps: Gear pump for main and auxiliary winches,boom hoist and telescope cylinders. Gear pump for steering. Gear pump for outriggers and slewing. 700 liter(185 gal)hydraulic reservoir with external sight and temperature gauge. Easily accessible (10 micron)cartidge-style full-flow filters with bypass protection. Max.operating pressure:27MPa(3915 psi,270 bar).		
Counterweight	Single 5,000kg(11,000 lbs.)fixed counterweight. Length.....2.6m(8.5ft.). Width.....0.6m(1.9ft.). Height.....0.7m(2.3ft.).	Swing	Bi-directional hydraulic swing drive with multi-disc wet brake and planet ary reduction gearbox.Spring-applied hydraulically released swing brake and 360° pneumatic positive swing lock. Max.swing speed:.....2.5rpm
LMI	HIRSCHMANN LMI control system.Microguard graphic display load moment t and anti-two block system with audio-visual warning and function limiter. System displays the following information:crane configuration,boom length,boom angle, load radius,allowed capacity,actual load,and load percentage of allowed capacity. System includes settable work parameters :min./max. boom length,min./max.boom angle, defined swing area.		
Main Boom	Four-section,full-power,synchronized boom,Boom is constructed of high-yield steel. 5 sheave quick reeve boom tip with removable rope guards.Rope termination lugs on both sides of boom head. Auxiliary lifting sheave and manual angle indicator are included. Fully extended boom length.....34m(111.5 ft.) Fully retracted boom length.....10.8m(35 ft.). Max.tip height,main boom.....34.8m(114.2 ft). Boom angle range (min./max.).....-3°/+78°		
Boom with Jib	10-17m(33-56 ft.)jib consisting of 10m(33 ft.)lattice side stow jib and 7m(23 ft.) manual pull out section.Main jib is offsteerable at 0°-20° and 40°. Max.tip height with 10m(33 ft.)jib erected is 46.6m(153 ft.). Max.tip height with 10m(33 ft.)jib+7m(23 ft.)fixed pullout extension is 52.4m(171.9 ft.).		
Winches	Standard two speed main and auxiliary hoists,each with planetary reduction and spring applied multi-disc wet brake. Each hoist features: Grooved drum lagging. Hoist drum cable followers. Max.permisible line pull.....7,000kg(15,432 lbs.). Winch speed:.....0-150m/min(0-492 fpm.). Power up/power down. Electronic drum rotation indicators. Rope construction.....19mm(0.75in.)rotation-resistant compacted strand.		
Hooks	55-ton(60 U.S.ton),5 sheave(steel),standard reeve hook block with odd part pin-off and safety latch. Hook block weight.....650kg(1,433 lbs.). 5.5-ton(6.7U.s.ton)top swivel hook ball with safety latch. Hook ball weight.....120kg(265 lbs)		

www.zoomlion.com