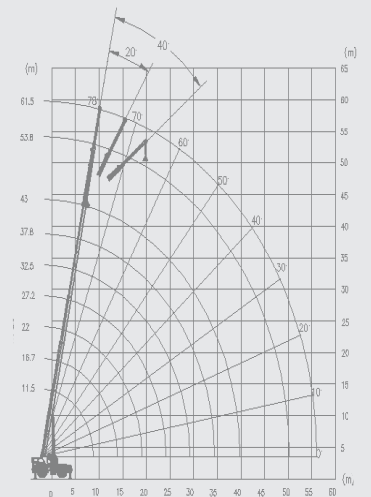
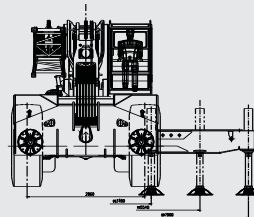
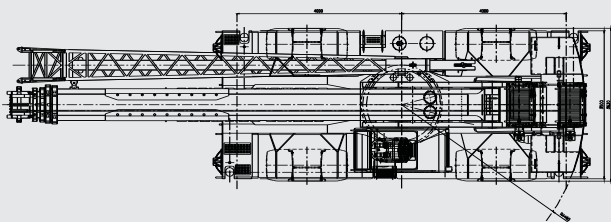
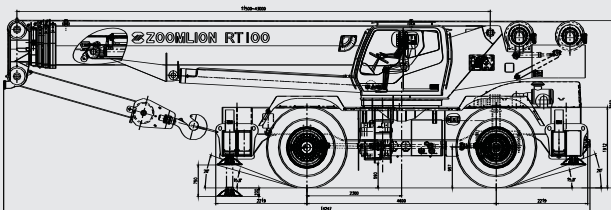


RT100

ROUGH TERRAIN CRANE



The Power of China, The legend of world.

ZOOMLION

RT100 ROUGH TERRAIN CRANE

Specification			
Maximum rated lifting capacity (Mode II)	11.5 m boom	100000 kg at 3 m	
	15.5 m boom	80500 kg at 3 m	
	19.5 m boom	56300 kg at 4m	
	27.3 m boom	32490 kg at 5.5 m	
	35.2 m boom	18890 kg at 8 m	
	43 m boom	9740 kg at 10 m	
Working performance	Max. rated lifting capacity × working radius	kg.m	100000 × 3.0
	Max. load moment of main boom	kN.m	3339
	Max. load moment of max. length main boom	kN.m	1388
	Max. lifting height of max. length main boom	m	45.6 (to the center of boom head sheave)
	Max. lifting height of jib	m	63
Dimensions	Overall dimensions (L × W × H)	mm	14247 × 3620 × 3960
	Distance between outriggers (Longitudinal × transversal)	mm	8000 × 7900
	Main boom length (Completely retracted – completely extended)	mm	11500 - 43000
	Jib length (Completely retracted – completely extended)	mm	10800 - 18500
	Boom angle	°	-3 - 78
	Swing range		360° unlimited swing (Full range)
Working speeds	Max. hoist rope speed (Main winch)	m/min	126
	Min. boom telescoping out time	s	170
	Min. boom telescoping in time	s	158
	Min. boom derricking up time	s	82
	Min. boom derricking down time	s	69
	Swing speed	r/min	0 - 1.5
Hydraulic system	Rated working pressure	MPa	30
	Rated working oil flow	L/min	500
	Hydraulic oil tank capacity	L	1200
Mass	Complete vehicle kerb mass	kg	67000
	Front axle load	kg	34200
	Rear axle load	kg	32800
Driving	Max. driving speed (Forwards / backwards)	km/h	24/15
	Wheelbase	mm	4600
	Treads (Front / Rear)	mm	2860
Specification			
Boom	Formed boom made with high-yield steel which reduces the operation weight of boom and maximize performance		
Axles	We choose the AxleTech Co.brand axle because AxleTech Co. offers the most reliable product on the market and has years of experience in manufacturing mobile crane axles.		
Cab	Full-vision operator's cab is designed for maximum comfort and ease of operation.		
Transmission	The DANA 16.4HR 36626 transmission offers the latest technology for the diverse needs of off-road cranes.		
Engine	The Cummins QSC8.3 diesel engine is TIE3-stageIII A compliant and is proven to have superior performance and durability.		
LMI	Hirschmann LMI delivers most reliable electronic monitoring system available.		

Technical Description			
Engine	Cummins QSC8.3.....inline 6 cylinder intercooled turbo diesel kilowatts kw(Hp).....224(304)@2200rpm peak torque Nm(ft.lb).....1356(1000)@1500rpm 300liter (79.2gal) USA Federal EPA/California ARB/European EU/Tier 3 emission rating		
Transmission	Dana powershift transmission 6 speeds forward and 3speeds reverse. Front axle disconnect offering both 4x4 and 4x2 operation. Max speed24km/hr(14.9)mph		
Axles	AxleTech front and rear steering axles with planetary reduction. Front-Rigid mount Rear-full-Floating rear axle.Automatic rear axle oscillating lock occurs when superstructure is swung 10°from centerline in either direction.		
Steering	Power steering with four independent modes: Front -Wheel Rear-Wheel All-Wheel Crab		
Brakes	495 millimeters (19.5 in) diameter disc brakes on all wheels hydraulically operaed	Tires and Wheels	29.5R29☆☆☆,earthmoving-style tiers.Steel disc wheels.
Outriggers	Four independent horizontal beams and vertical jacks with integral holding vavles. each independently controlled from operator cab . 100%—fully extended outrigger footprint—————680 sq.ft. (63.2 sq.m) 50%—fully extended outrigger footprint—————477 sq.ft. (44.3 sq.m) 0%—fully extended outrigger footprint—————273.8 sq.ft. (25.4 sq.m) light weight aluminum.quick release outrigger pontoons. Floating ground bearing area—————(0.24 sq.m) Outrigger Span —————Length 26.3ft(8m) Width 25.9ft(7.9m)		
Hydraulic System	PERMCO hydraulic pumps. Gear pump for main and auxiliary winches, boom hoist and telescope cylinders. Gear pump for steering. Gear pump for outriggers and slewing. 317 gallon (1200L) hydraulic reservoir withexternal sight and temperature gauge . Easily accessible (10 micron) cartridge style full flow filters with bypass protection. Max.operating pressure ———30Mpa (4351 psi ,300bar)		
Counterweight	Single 23810lb (10,800 kg) hyd removable counterweight. Length——10.5ft(3.2m) Width——3.74ft(1.14m) Height——1.8ft(0.55m)	Swing	Bi-directional hydraulic swing drive with multi-disc wet brake and planet ary reduction gearbox.Spring-applied hydraulically released swing brake and 360o pneumatic positive swing lock. Max.swing speed:.....1.5rpm
LMI	Hirschmann LMI control system.Microguard graphic display load moment and anti-two block system with audio-visual warning and function limiter. System displays the following information:crane configuration,boom length,boom angle, load radius,allowed capacity,actual load,and load percentage of allowed capacity. System includes settalbe work parameters :min/max. boom length,min/max.boom angle, defined swing area.		
Main Boom	The box-shaped main boom consists of 5 U-type boom sections made of high-strength steel. The main boom head is equipped with 7 sheaves, which is convenient for changing line parts without removing the wedges. The rooster sheave is optional. Fully extended boom length.....141ft. (43m) Fully eretracted boom length.....38ft. (11.5m) Max.tip height , main boom149.6ft.(45.6m) Max.tip height,jib erected/pullout retracted 182ft.(55.5m) Max.tip height,jib erected/pullout extended 206.6ft.(63m)		
Boom with Jib	35-60ft.(10.8-18.5m)jib consisting of 35ft (11m) lattice side stow jib and 25ft (.8m)manual pull out section.Main jib is offsettable at 0°,20°and 40°. Max tip height with 35ft.(10.8m)jib erected is 182ft(55.5m). Max tip height with 35ft.(10.8m)jib+25ft.(7.7m) fixed pullout extension is 206.6ft(63m).		
Winches	Standard two speed main and auxiliary hoists,each with planetary reduction and spring applied multi-disc wet brake. Each hoist features: Grooved drum lagging. Hoist drum cable followers. Max.permissible line pull.....21,605kg(9800 kg). Winch speed:.....0-413fpm(126m/min). Power up/power down. Electronic drum rotation indicators. Rope construction:.....20mm(0.75in.)rotation-resistant compacted strand.		
Hooks	100,7 sheave(steel),standard reeve hook block with odd part pin-off and safety latch. Hook block weight.....650kg(1,433 lbs.). 7-ton(6.7U.s.ton)top swivel hook ball with safety latch. Hook ball weight.....360lb(163.5kg)		

www.zoomlion.com